

**USM Haller**  
Components

**1 Metal panel**

Available in various sizes and 14 standard colors. Details see pages 16 and 38.

**2 Perforated metal panel**

W: 750 / H: 500  
W: 500 / H: 500

W: 750 / H: 350  
W: 500 / H: 350  
W: 395 / H: 350  
W: 350 / H: 350

W: 750 / H: 250  
W: 500 / H: 250  
W: 350 / H: 250

**3 Acoustic panel**

Perforated metal panel lined with sound-absorbing fabric.

W: 750 / H: 500  
W: 500 / H: 500

W: 750 / H: 350  
W: 500 / H: 350  
W: 395 / H: 350  
W: 350 / H: 350

W: 750 / H: 250  
W: 500 / H: 250  
W: 350 / H: 250

**4 Glass Panel**

Details see page 14.

**5 Countertop inset panel**

Available in lacquered glass in 14 standard colors, pearl grey and dark grey plastic laminate.

W: 750 / H: 500  
W: 750 / H: 350

W: 500 / H: 500  
W: 500 / H: 350

W: 350 / H: 350

**6 Glass door**

Handle available with or without lock. Hinges in black or chrome finish. Details see page 14.

**7 Metal drop down door**

Available with pull handle or turning handle with or without locks.\*

W: 750 / H: 395  
W: 500 / H: 395

W: 750 / H: 350  
W: 500 / H: 350  
W: 395 / H: 350  
W: 350 / H: 350

W: 750 / H: 250  
W: 500 / H: 250

W: 750 / H: 175  
W: 500 / H: 175

For depths 250, 350 and 500

Available also as acoustic drop down door, lined with sound-absorbing fabric.

W: 750 / H: 350  
W: 500 / H: 350  
W: 395 / H: 350

W: 750 / H: 250

**8 Metal flip up door**

Available with pull handle or turning handle with or without locks.\*

W: 750 / H: 350  
W: 500 / H: 350

For depths 350 and 500

Available also as acoustic flip up door, lined with sound-absorbing fabric.

W: 750 / H: 350  
W: 500 / H: 350

**9 Metal extension door**

Available with pull handle or turning handle with or without locks.\*

W: 750 / H: 395  
W: 500 / H: 395

W: 750 / H: 350  
W: 500 / H: 350  
W: 395 / H: 350

W: 750 / H: 250  
W: 500 / H: 250

W: 750 / H: 175  
W: 500 / H: 175

For depths 350 and 500

Available also as acoustic extension door, lined with sound-absorbing fabric.

W: 750 / H: 350  
W: 500 / H: 350

W: 750 / H: 250

**10 Drawer**

Available with pull handle or turning handle with or without locks.\* Closed or open front.

W: 750 / H: 350  
W: 500 / H: 350

W: 750 / H: 250  
W: 500 / H: 250

W: 750 / H: 175  
W: 500 / H: 175

For depths 350 and 500

Available also as acoustic drawer, lined with sound-absorbing fabric.

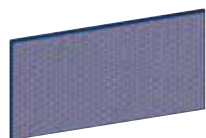
W: 750 / H: 350  
W: 500 / H: 350

W: 750 / H: 250

\* Locking handle also available as an electronic closure (countries of availability upon request).  
All measurements in mm.



1



2



3



4



5



6



7



8



9



10

## USM Haller

### Components

#### 1 Metal divider shelf

Height adjustable.

W: 750 / D: 500

W: 750 / D: 350

W: 750 / D: 250

W: 500 / D: 500

W: 500 / D: 350

#### 2 Glass divider shelf

Height adjustable. Mounts to metal side panels only. Details see page 14.

#### 3 Metal angled shelf

Lifts up for additional storage space behind.

W: 750 / H: 350

W: 500 / H: 350

#### 4 Metal extension shelf

Pulls out with telescopic mechanism.

W: 750 / D: 500

W: 750 / D: 350

W: 500 / D: 500

W: 500 / D: 350

W: 395 / D: 500

W: 395 / D: 350

#### 5 Extension filing set

Mounted on telescopic mechanism. Available with or without front panels. The inserts available in two heights.

W: 750 / D: 500

W: 395 / D: 500

#### 6 Bookshelf panel

W: 750 / D: 350

W: 750 / D: 250

#### 7 Small drawer

Available with or without lock.\*

W: 395 / D: 500 / H: min. 100

#### 8 Drawer A6

Available with or without lock.\*

W: 395 / D: 500 / H: min. 175

#### 9 Drawer A5

Available with or without lock.\*

W: 395 / D: 500 / H: min. 250

#### 10 Drawer A4

Available with or without lock.\*

W: 395 / D: 500 / H: min. 350

\* Locking handle also available as an electronic closure (countries of availability upon request).

All measurements in mm.



1



2



3



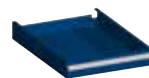
4



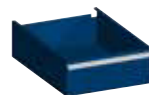
5



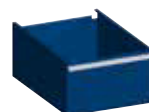
6



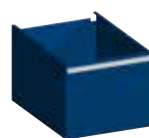
7



8



9



10

## USM Haller

### Accessories

#### 1 USM Inos organizing drawer set

Available in graphite black or light gray. Freestanding or inserted on an extension shelf or in drawers.

#### 2 USM Inos CD tray

Available in graphite black or light gray, freestanding or inserted on an extension shelf or in drawers.

Inserts for 23 CDs  
D: 500

Inserts for 14 CDs  
D: 350

#### 3 USM Inos DVD tray

Available in graphite black or light gray, freestanding or inserted on an extension shelf or in drawers.

Inserts for 16 DVDs  
D: 500

Inserts for 9 DVDs  
D: 350

#### 4 USM Inos card-box set

Available in graphite black or light gray, freestanding or inserted on an extension shelf or in drawers.

For drawers A5 or A6  
D: 500

For drawers A4, A5 or A6  
D: 350

#### 5 USM Inos angled file trays

Available in graphite black or light gray. Inserted on an extension shelf or in drawers.

W: 750 / D: 500  
W: 395 / D: 500

W: 750 / D: 350

#### 6 USM hanging file baskets

Inserted on an extension shelf. Letter and legal size filing available.

W: 750 / D: 500  
W: 750 / D: 350

#### 7 USM metal box insert

Four-part box inserted in the extension shelves and extension doors with one or two dividers. Available in 14 standard colors. Details see page 69.

W: 750 / D: 500  
W: 500 / D: 500

W: 750 / D: 350  
W: 500 / D: 350

Door heights 175, 250 and 350

#### 8 USM Inos box set C4

Available in graphite black or light gray. Freestanding or inserted on a shelf.

5 drawer box set open or closed front.

10 drawer box set open or closed front.

#### 9 Bookends for metal panels

a Metal magnetic bookend in graphite black and light gray.

b Metal rail mounted to side panels with adjustable book-end frames.

#### 10 Bookend for bookshelf panel

Metal sliding bookend in graphite black or light gray to be combined with the bookshelf panel.

#### 11 Perforated metal waste basket

Available in graphite black and light gray.

Ø: 302 / H: 400

Available with a black plastic divider for recyclables.

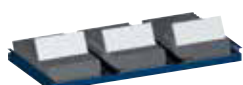
All measurements in mm.



1



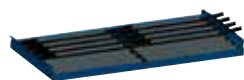
2



3



4



5



6



7



8



9a



9b



10



11