

Coffee Table

Isamu Noguchi, 1944

vitra.



Coffee Table

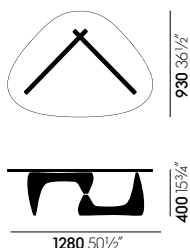
The sculptor and designer Isamu Noguchi himself described the Coffee Table as his best furniture design – no doubt because it is reminiscent of his biomorphic sculptures in bronze and marble from the same period, translating the typical forms of the latter into a piece of sculptural

furniture. The heavy plate glass top of the Coffee Table rests on two identical wooden elements placed at right angles. © The Isamu Noguchi Foundation.

Materials

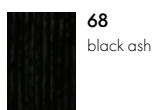
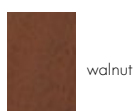
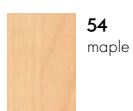
- **Table top:** heavy glass, 19 mm, rounded edges.
- **Base:** solid wood with lacquer finish, rounded edges.

Measurements



Coffee Table

Surfaces and colours



Base

Art. no. 09157802

Vitra is represented worldwide. Your local Vitra partner can be found at: www.vitra.com.

info@vitra.com | EN 2013

www.vitra.com/coffeetable

