



Home office and studio

The PACC and PSCC versions feature a height-adjustable five-star base on castors with both spring and swivel functions. The chairs offer pleasant comfort in office environments where work tasks require shorter periods of sitting.

Materials PACC

- **Base:** five-star base in polished die-cast aluminium with double castors in basic dark. (PACC = Pivot Armchair Cast Base on Castors)

Materials PSCC

- **Base:** five-star base in polished die-cast aluminium with double castors in basic dark. (PSCC = Pivot Side Chair Cast Base on Castors)



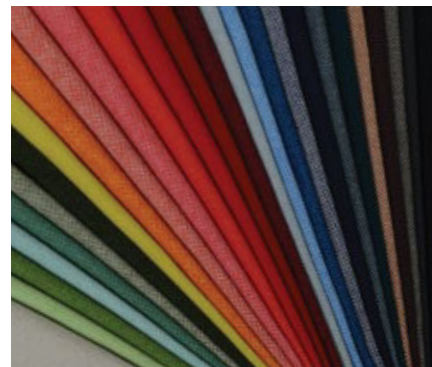
PACC

PSCC

**Hopsak**

100 % polyamide | 550 g/m²

Hopsak is an expressive flat-woven textile made of polyamide. The duotone colours offer a multitude of design possibilities in high-contrast, brightly hued or subtle combinations of warp and weft threads. Hopsak is a durable and robust fabric that can be used in private interiors as well as public areas. It is available in 28 different colours.

**CARE INSTRUCTIONS****Cover fabrics**

To care for cover fabrics, vacuum regularly with an upholstery nozzle to remove dust and lint. Fresh spots and spills can usually be removed by blotting immediately with an absorbent, lint-free sponge or cloth. To prevent remaining traces of a ring mark, work from the edge of the spot towards the centre.

To avoid mineral residue from remaining on dark fabrics after drying, we recommend the use of household-grade distilled water for dampening. Stubborn stains can be treated by brushing dry stains lightly with a soft brush (for example, a clothes brush). Depending on the type of stain, the use of solvents may be necessary. In such cases, it is essential to consult a professional cleaner. Under no circumstances should cover fabrics be rubbed vigorously. Please be sure to consult a specialist before using any solvent-based cleaning product.

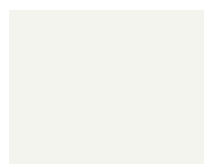
Plastics

Vitra plastics are very robust, with excellent shape retention and colourfastness, making them resistant to a variety of chemicals and other substances. Furthermore, special additives retard the fading of colours due to UV radiation. However, the exposure of a chair to sunlight for prolonged periods may cause the colour to change over time. For this reason, limited exposure to sunlight is advisable. Please use a soft, damp, non-abrasive cloth to clean plastic surfaces and dry gently. For stain removal, we recommend the use of a mild, commercially available cleaning agent. Always avoid abrasive cleaning agents including powders and pastes as well as aggressive 'all-purpose' cleaners containing alcohol, which will damage the surface.

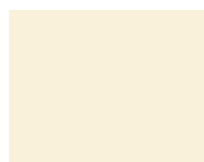


In collaboration with the Dutch designer Hella Jongerius, Vitra has developed a broad palette of colours for seat shells and upholstery materials, allowing an endless number of combinations to suit any interior.

Shell colours



04
white



30
cream



23
ice grey



94
moss grey



73
navy blue



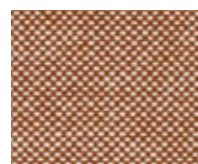
21
ocean



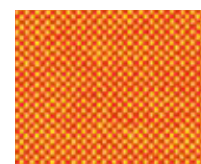
Suggested upholstery colours



74
dark blue/ivory



88
cognac/ivory



72
yellow/poppy red



79
warmgrey/ivory



69
grass-green/ivory



81
ice blue/ivory



82
ice blue/moor brown



87
ivory/forest



70
grass-green/forest



84
blue/moor brown



83
blue/ivory



73
petrol/moor brown



85
mint/ivory

Shell colours



93
classic green



34
mustard



03
red (poppy red)



28
classic red



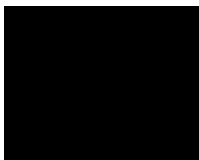
89
oxide red



25
mauve grey



35
basalt



01
basic dark



Suggested upholstery colours



86
mint/forest



70
grass-green/forest



69
grass-green/ivory



71
yellow/pastel green



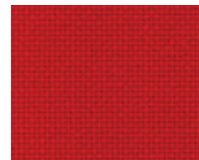
65
coral/poppy red



68
pink/poppy red



67
poppy red/ivory



63
red/poppy red



96
red/cognac



76
marron/moor brown



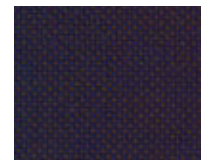
62
red/moor brown



80
warmgrey/moor brown



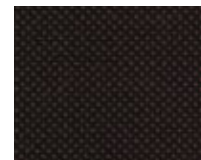
05
dark grey



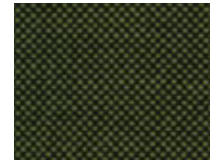
75
dark blue/moor brown



66
nero



78
nero/moor brown



77
nero/forest

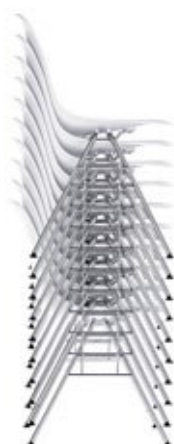


DAL

RAR



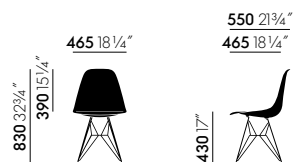
PSCC & PACC



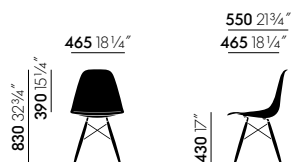
DSS & DSS-N



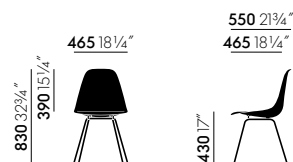
Eames Plastic Chair on beam



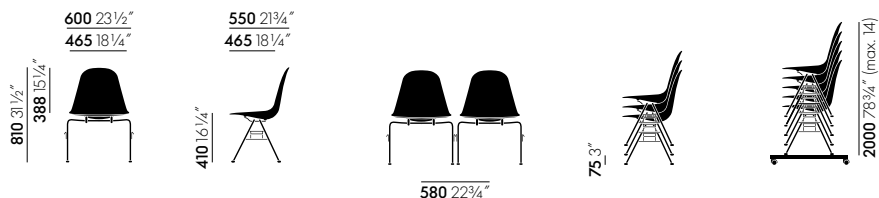
DSR



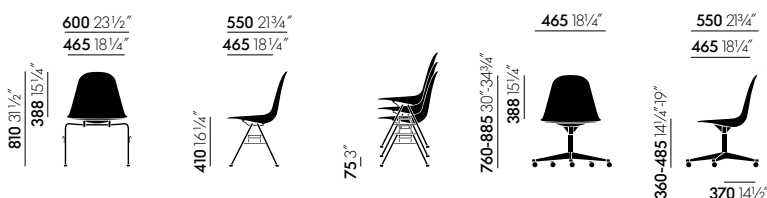
DSW



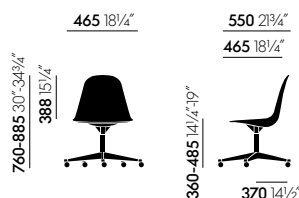
DSX



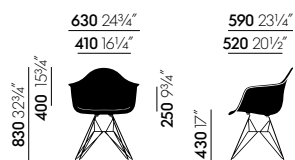
DSS



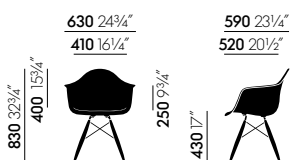
DSS-N



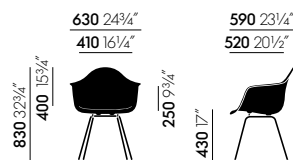
PSSC



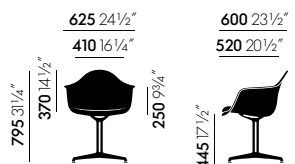
DAR



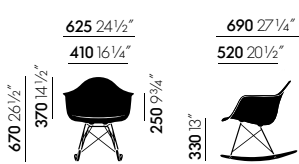
DAW



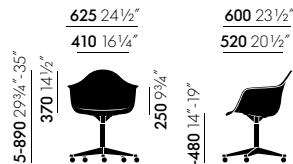
DAX



DAL



RAR



PACC

SURFACES AND COLOURS

vitra.



Hopsak

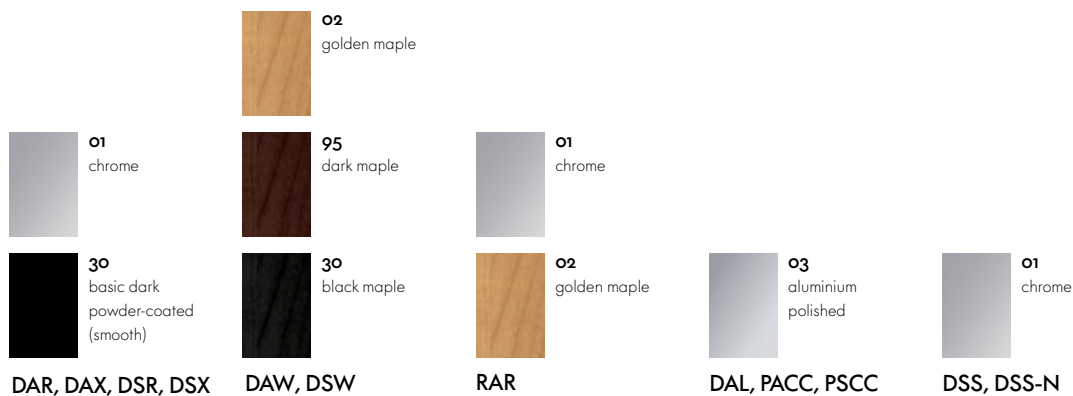


Hopsak

Seat shell

Piping

BASES



DAR, DAX, DSR, DSX

DAW, DSW

RAR

DAL, PACC, PSCC

DSS, DSS-N

