

# Catifa 46 / Trestle swivel

## Design by Lievore Altherr Molina, 2004

**Art. 0257:** Trestle swivel base and polypropylene or upholstered shell

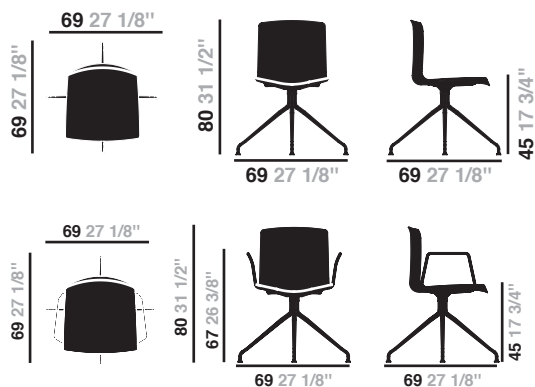
**Art. 0257BV:** Trestle swivel base and polypropylene or upholstered shell with armrests

Chair with trestle swivel base in chromed steel. The shell is available in single-color or bi-color polypropylene or upholstered in two grades of hard leather. Available steel armrests, also with polypropylene pads.



*clip.it.easy*

### Dimensions\*



\* Files CAD 2D - 3D available for download at [www.arper.com](http://www.arper.com)

### Shipment details

Art. 0257	kg	m <sup>3</sup>	lb	ft <sup>3</sup>
1 PCS = 2 boxes	10.6	0.245	23.32	8.652
4 PCS = 2 boxes	32.4	0.336	71.28	11.865
Art. 0257BV				
1 PCS = 3 boxes	12.98	0.274	28.556	9.676
4 PCS = 3 boxes	40.54	0.372	89.188	13.137

### Base finishes



CRO  
Chrome  
finish  
steel

### Materials

#### Polypropylene



PO  
Polypropylene  
one color  
10 colors



PO  
Polypropylene  
two colors  
10 colors

#### Carded In Hard leather



CU  
Hard leather  
grade 1  
4 colors



CT  
Hard leather  
grade 2  
13 colors

# Catifa 46 / Trestle swivel

## Design by Lievore Altherr Molina, 2004

Art. 0259: Trestle swivel base and upholstered shell

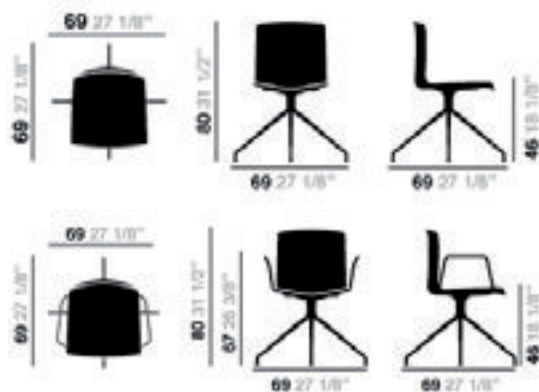
Art. 0259BV: Trestle swivel base and upholstered shell with armrests

Chair with trestle swivel base in chromed steel. The shell is available with upholstery in leather, faux leather, fabric or customer's fabric. Available steel armrests, also with upholstered pads.



*clip.it.easy*

### Dimensions\*



\* Files CAD 2D - 3D available for download at [www.arper.com](http://www.arper.com)

### Shipment details

Art. 0259	kg	m <sup>3</sup>	lb	ft <sup>3</sup>
1 PCS = 2 boxes	11.9	0.267	26.18	9.429
4 PCS = 2 boxes	38.4	0.392	84.48	13.843
Art. 0259BV				
1 PCS = 3 boxes	14.28	0.296	31.416	10.453
4 PCS = 3 boxes	46.54	0.428	102.388	15.114

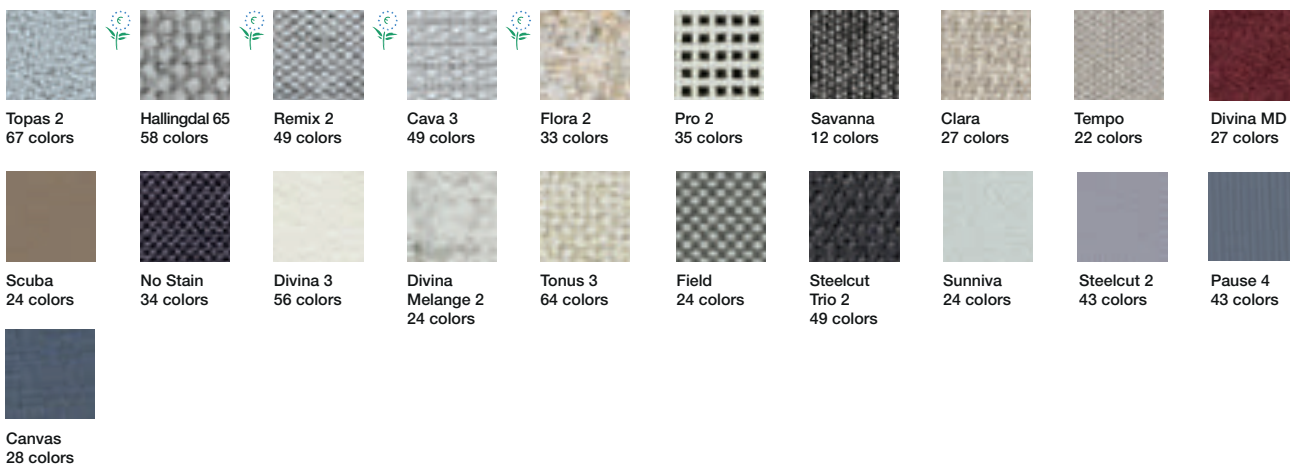
### Base finishes



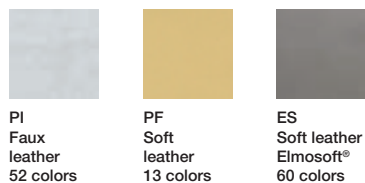
CRO  
Chrome  
finish  
steel

### Materials

#### Carded In Fabrics **kvadrat** and No Stain



#### Carded In Faux leather, Soft leather and chrome free leather by **elmo**.



# Catifa 46 / Trestle swivel

## Design by Lievore Altherr Molina, 2004

---

Graded In Fabrics by

**kvadrat**

[www.kvadrat.dk](http://www.kvadrat.dk)

**camira**

[www.camirafabrics.com](http://www.camirafabrics.com)



[www.fidivi.com](http://www.fidivi.com)

**Gabriel**

[www.gabriel.dk](http://www.gabriel.dk)



[www.spradling.eu](http://www.spradling.eu)

 **climatex**

[www.climatex.com](http://www.climatex.com)

**Serge Ferrari**

[www.en.sergeferrari.com](http://www.en.sergeferrari.com)



[www.en.sergeferrari.com](http://www.en.sergeferrari.com)

**DESIGN  
TEX**

[www.designtex.com](http://www.designtex.com)

**maharam**

[www.maharam.com](http://www.maharam.com)

Visit the company website [www.arper.com](http://www.arper.com) to view the available fabrics and swatches.

# Catifa 46 / Trestle swivel

## Design by Lievore Altherr Molina, 2004

Art. 0314: Trestle swivel base and shell with removable cover

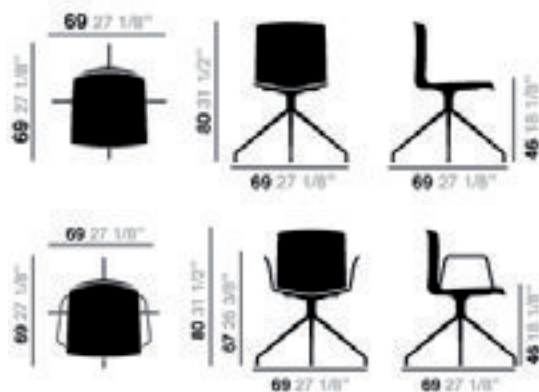
Art. 0314BV: Trestle swivel base and shell with removable cover and armrests

Chair with trestle swivel base in chromed steel. The shell is upholstered with a removable non-washable cover in leather, faux leather, fabric or customer's fabric. Available steel armrests, also upholstered.



*clip.it.easy*

### Dimensions\*



\* Files CAD 2D - 3D available for download at [www.arper.com](http://www.arper.com)

### Shipment details

Art. 0314	kg	m <sup>3</sup>	lb	ft <sup>3</sup>
1 PCS = 2 boxes	11.9	0.267	26.18	9.429
4 PCS = 2 boxes	38.4	0.392	84.48	13.843
Art. 0314BV				
1 PCS = 3 boxes	14.28	0.296	31.416	10.453
4 PCS = 3 boxes	46.54	0.428	102.388	15.114

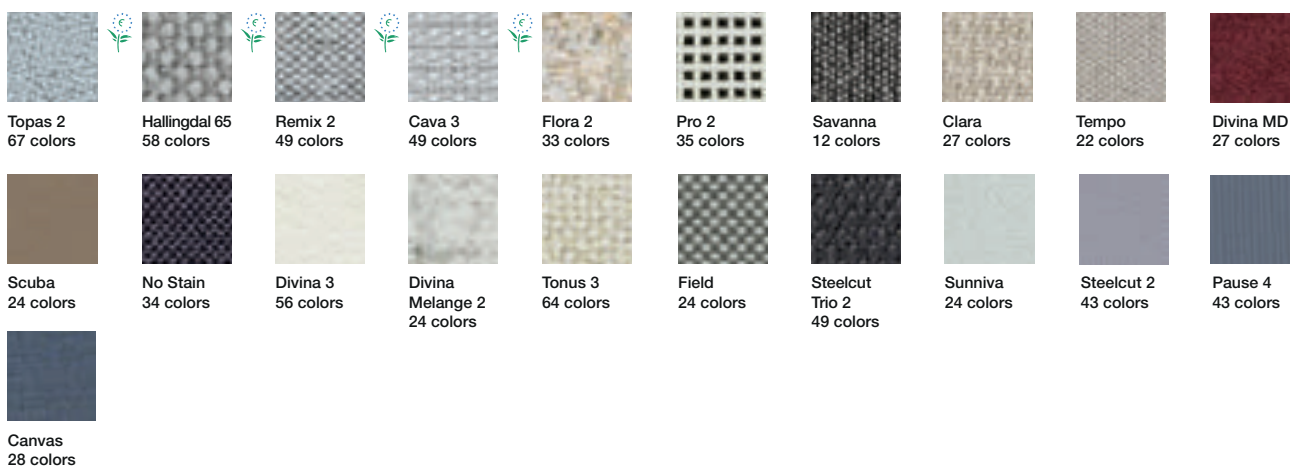
### Base finishes



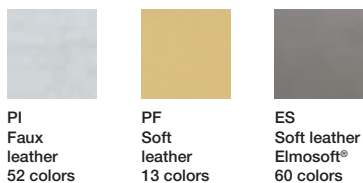
CRO  
Chrome  
finish  
steel

### Materials

#### Carded In Fabrics **kvadrat** and No Stain



#### Carded In Faux leather, Soft leather and chrome free leather by **elmo**.



# Catifa 46 / Trestle swivel

## Design by Lievore Altherr Molina, 2004

---

Graded In Fabrics by

**kvadrat**

[www.kvadrat.dk](http://www.kvadrat.dk)

**camira**

[www.camirafabrics.com](http://www.camirafabrics.com)



[www.fidivi.com](http://www.fidivi.com)

**Gabriel**

[www.gabriel.dk](http://www.gabriel.dk)



[www.spradling.eu](http://www.spradling.eu)

 **climatex**

[www.climatex.com](http://www.climatex.com)

**Serge Ferrari**

[www.en.sergeferrari.com](http://www.en.sergeferrari.com)



[www.en.sergeferrari.com](http://www.en.sergeferrari.com)

**DESIGN  
TEX**

[www.designtex.com](http://www.designtex.com)

**maharam**

[www.maharam.com](http://www.maharam.com)

Visit the company website [www.arper.com](http://www.arper.com) to view the available fabrics and swatches.

# Catifa 46 / Trestle swivel

## Design by Lievore Altherr Molina, 2004

Art. 0357: Trestle swivel base and wood shell

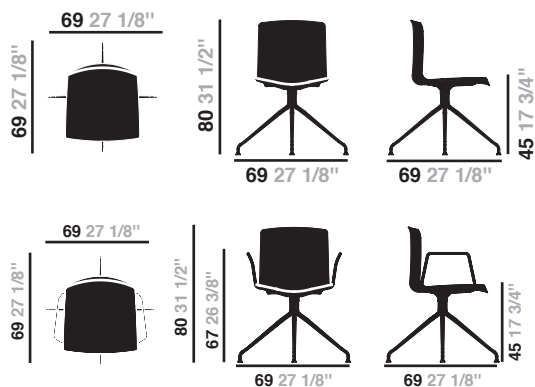
Art. 0357BV: Trestle swivel base and wood shell with armrests

Chair with trestle swivel base in chromed steel, fitted with or without armrests. The shell is available in wood in three finishes (natural oak, bleached oak, wengé). Optional steel armrests are available upon request.



*clip.it.easy*

### Dimensions\*



\* Files CAD 2D - 3D available for download at [www.arper.com](http://www.arper.com)

### Shipment details

	kg	m <sup>3</sup>	lb	ft <sup>3</sup>
Art. 0357				
1 PCS = 2 boxes	10.08	0.243	22.176	8.581
4 PCS = 2 boxes	30.3	0.348	66.66	12.289
Art. 0357				
1 PCS = 3 boxes	12.46	0.272	27.412	9.605
4 PCS = 3 boxes	38.44	0.384	84.568	13.560

### Base finishes



CRO  
Chrome  
finish  
steel

### Materials

#### Wood



L  
Wood  
3 colors

# Catifa 46 / Trestle swivel

## Design by Lievore Altherr Molina, 2004

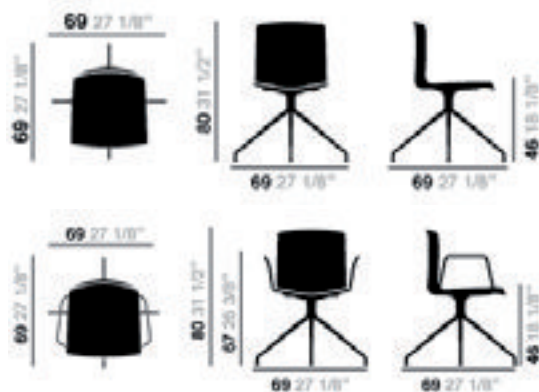
**Art. 0460: Trestle swivel base and front-base upholstery shell**  
**Art. 0460BV: Trestle swivel base and front-base upholstery shell with armrests**

Chair with trestle swivel base in chromed steel. The shell is available in polypropylene with front-face upholstery in leather, faux leather, fabric or customer's fabric. Available steel armrests also with polypropylene or upholstery pads.



*clip.it.easy*

### Dimensions\*



\* Files CAD 2D - 3D available for download at [www.arper.com](http://www.arper.com)

### Shipment details

Art. 0460	kg	m <sup>3</sup>	lb	ft <sup>3</sup>
1 PCS = 2 boxes	13.30	0.274	29.26	9.676
4 PCS = 2 boxes	39.84	0.400	87.648	14.125
Art. 0460BV				
1 PCS = 3 boxes	15.68	0.303	34.496	10.7
4 PCS = 3 boxes	47.96	0.436	105.512	15.397

### Base finishes



CRO  
Chrome  
finish  
steel

### Materials

#### Polypropylene

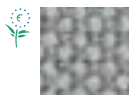


PO  
Polypropylene  
10 colors

#### Carded In Fabrics **kvadrat** and **No Stain**



Topas 2  
67 colors



Hallingdal 65  
58 colors



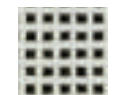
Remix 2  
49 colors



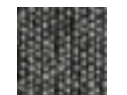
Cava 3  
49 colors



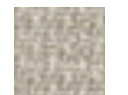
Flora 2  
33 colors



Pro 2  
35 colors



Savanna  
12 colors



Clara  
27 colors



Tempo  
22 colors



Divina MD  
27 colors



Scuba  
24 colors



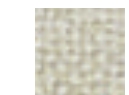
No Stain  
34 colors



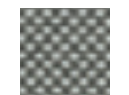
Divina 3  
56 colors



Divina  
Melange 2  
24 colors



Tonus 3  
64 colors



Field  
24 colors



Steelcut  
Trio 2  
49 colors



Sunniva  
24 colors



Steelcut 2  
43 colors



Pause 4  
43 colors



Canvas  
28 colors

# Catifa 46 / Trestle swivel

## Design by Lievore Altherr Molina, 2004

---

Carded In Faux leather, Soft leather and Chrome Free leather **elmo**.



PI  
Faux  
leather  
52 colors



PF  
Soft  
leather  
13 colors



ES  
Soft leather  
Elmosoft®  
60 colors

---

Graded In Fabrics by

**kvadrat**

[www.kvadrat.dk](http://www.kvadrat.dk)

**camira**

[www.camirafabrics.com](http://www.camirafabrics.com)



[www.fidivi.com](http://www.fidivi.com)

**Gabriel**

[www.gabriel.dk](http://www.gabriel.dk)



[www.spradling.eu](http://www.spradling.eu)

 **climatex**®

[www.climatex.com](http://www.climatex.com)

**Serge Ferrari**

[www.en.sergeferrari.com](http://www.en.sergeferrari.com)



[www.en.sergeferrari.com](http://www.en.sergeferrari.com)

**DESIGN  
TEX**

[www.designtex.com](http://www.designtex.com)

**maharam**

[www.maharam.com](http://www.maharam.com)

Visit the company website [www.arper.com](http://www.arper.com) to view the available fabrics and swatches.

**arper**

F +39 0422 791800

T +39 0422 7918

[www.arper.com](http://www.arper.com)



# Catifa 46 / Trestle swivel

## Design by Lievore Altherr Molina, 2004

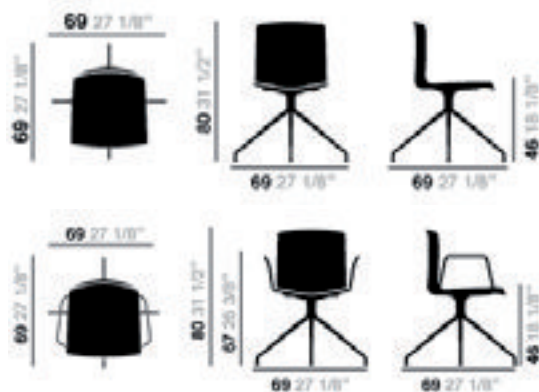
**Art. 0455: Trestle swivel base and seat surface upholstery**  
**Art. 0455BV: Trestle swivel base and seat surface upholstery shell with armrests**

Chair with trestle swivel base in chromed steel. The shell is available in polypropylene with front-face upholstery in leather, faux leather, fabric or customer's fabric. Available steel armrests also with polypropylene or upholstery pads.



*clip.it.easy*

### Dimensions\*



\* Files CAD 2D - 3D available for download at [www.arper.com](http://www.arper.com)

### Shipment details

Art. 0455	kg	m <sup>3</sup>	lb	ft <sup>3</sup>
1 PCS = 2 boxes	10.60	0.245	23.32	8.652
4 PCS = 2 boxes	32.40	0.336	71.28	11.865
Art. 0455BV				
1 PCS = 3 boxes	15.68	0.303	34.496	10.7
4 PCS = 3 boxes	47.96	0.436	105.512	15.397

### Base finishes



CRO  
Chrome  
finish  
steel

### Materials

#### Polypropylene



PO  
Polypropylene  
10 colors



PO  
Polypropylene  
two colors  
10 colors

#### Carded In Fabrics **kvadrat** and **No Stain**



Topas 2  
67 colors



Hallingdal 65  
58 colors



Remix 2  
49 colors



Cava 3  
49 colors



Flora 2  
33 colors



Pro 2  
35 colors



Savanna  
12 colors



Clara  
27 colors



Tempo  
22 colors



Divina MD  
27 colors



Scuba  
24 colors



No Stain  
34 colors



Divina 3  
56 colors



Divina  
Melange 2  
24 colors



Tonus 3  
64 colors



Field  
24 colors



Steelcut  
Trio 2  
49 colors



Sunniva  
24 colors



Steelcut 2  
43 colors



Pause 4  
43 colors



Canvas  
28 colors

# Catifa 46 / Trestle swivel

## Design by Lievore Altherr Molina, 2004

---

Carded In Faux leather, Soft leather and Chrome Free leather **elmo**.



PI  
Faux  
leather  
52 colors



PF  
Soft  
leather  
13 colors



ES  
Soft leather  
Elmosoft®  
60 colors

---

Graded In Fabrics by

**kvadrat**

[www.kvadrat.dk](http://www.kvadrat.dk)

**camira**

[www.camirafabrics.com](http://www.camirafabrics.com)



[www.fidivi.com](http://www.fidivi.com)

**Gabriel**

[www.gabriel.dk](http://www.gabriel.dk)



[www.spradling.eu](http://www.spradling.eu)

 **climatex**®

[www.climatex.com](http://www.climatex.com)

**Serge Ferrari**

[www.en.sergeferrari.com](http://www.en.sergeferrari.com)



[www.en.sergeferrari.com](http://www.en.sergeferrari.com)

**DESIGN  
TEX**

[www.designtex.com](http://www.designtex.com)

**maharam**

[www.maharam.com](http://www.maharam.com)

Visit the company website [www.arper.com](http://www.arper.com) to view the available fabrics and swatches.

**arper**

F +39 0422 791800

T +39 0422 7918

[www.arper.com](http://www.arper.com)

# Catifa 46 / Trestle swivel

## Design by Lievore Altherr Molina, 2014

Art. 0331: Trestle swivel base, wood shell and front-face upholstery

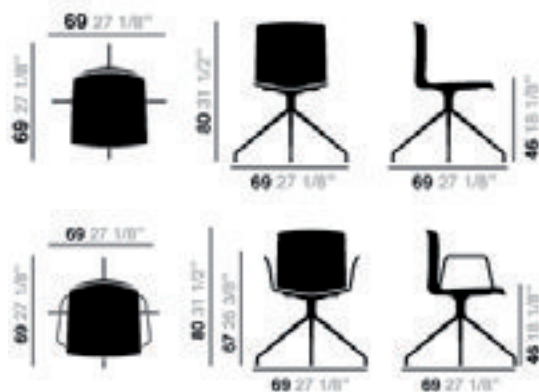
Art. 0331BV: Trestle swivel base, wood shell and front-face upholstery with armrests

Chair with chromed steel swivel trestle base. Wood shell with front upholstery in leather, faux leather, fabric or customer's own material. Steel armrests, also upholstered, are available upon request.



*clip.it.easy*

### Dimensions\*



\* Files CAD 2D - 3D available for download at [www.arper.com](http://www.arper.com)

### Shipment details

Art. 0331	kg	m <sup>3</sup>	lb	ft <sup>3</sup>
1 PCS = 2 boxes	13.30	0.274	29.26	9.676
4 PCS = 2 boxes	39.84	0.400	87.648	14.125

### Base finishes



CRO  
Chrome  
finish  
steel

### Materials

#### Wood



L Wood  
3 colors

### Carded In Fabrics *kvadrat* and No Stain



Topas 2  
67 colors



Hallingdal 65  
58 colors



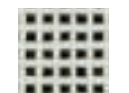
Remix 2  
49 colors



Cava 3  
49 colors



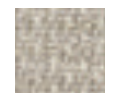
Flora 2  
33 colors



Pro 2  
35 colors



Savanna  
12 colors



Clara  
27 colors



Tempo  
22 colors



Divina MD  
27 colors



Scuba  
24 colors



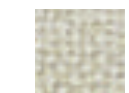
No Stain  
34 colors



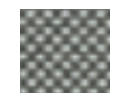
Divina 3  
56 colors



Divina  
Melange 2  
24 colors



Tonus 3  
64 colors



Field  
24 colors



Steelcut  
Trio 2  
49 colors



Sunniva  
24 colors



Steelcut 2  
43 colors



Pause 4  
43 colors



Canvas  
28 colors

# Catifa 46 / Trestle swivel

## Design by Lievore Altherr Molina, 2014

---

Carded In Faux leather, Soft leather and Chrome Free leather **elmo**.



PI  
Faux  
leather  
52 colors



PF  
Soft  
leather  
13 colors



ES  
Soft leather  
Elmosoft®  
60 colors

---

Graded In Fabrics by

**kvadrat**

[www.kvadrat.dk](http://www.kvadrat.dk)

**camira**

[www.camirafabrics.com](http://www.camirafabrics.com)



[www.fidivi.com](http://www.fidivi.com)

**Gabriel**

[www.gabriel.dk](http://www.gabriel.dk)



[www.spradling.eu](http://www.spradling.eu)

 **climatex**®

[www.climatex.com](http://www.climatex.com)

**Serge Ferrari**

[www.en.sergeferrari.com](http://www.en.sergeferrari.com)



[www.en.sergeferrari.com](http://www.en.sergeferrari.com)

**DESIGN  
TEX**

[www.designtex.com](http://www.designtex.com)

**maharam**

[www.maharam.com](http://www.maharam.com)

Visit the company website [www.arper.com](http://www.arper.com) to view the available fabrics and swatches.

**arper**

F +39 0422 791800

T +39 0422 7918

[www.arper.com](http://www.arper.com)

# Catifa 46 / Trestle swivel

## Design by Lievore Altherr Molina, 2004

---

### Options and accessories



1

2

3



4



5

6

7

8

- 1 Armrest with polypropylene one color pad
- 2 Armrest with upholstery pad
- 3 Cushion
- 4 Set of glides

- 5 Cover 1
- 6 Cover 2
- 7 Cover 3
- 8 Cover 4

arper

F +39 0422 791800

T +39 0422 7918

www.arper.com

# Catifa 46 / Trestle swivel

## Design by Lievore Altherr Molina, 2004

### Fire retardant test

### Resistance test



**UK DOMESTIC:**  
BS5852-1 Sch.5 Part1: Hard leather grade 1 and 2. BS5852/90 Sez.5 cigarette match: Polypropylene

**ITALIA Class 11M:** Divina 3, Divina Melange, Flora, Hallingdal, Pro, Tonus, Topas, Leather PF (with fire retardant treatment, Faux leather).



epd-norge.no



Art.0257 and 0257BV

EN 1728/2000 - EN 15373:2007 6.2.1 3°  
EN 1728/2000 - EN 15373:2007 6.2.2 3°  
EN 1728/2000 - EN 15373:2007 6.7 3°



**UK CONTRACT:**  
BS7176-07 Medium Hazard: Fabric (Flora 2, Pro, Tonus 3, Topas 2, Hallingdal 65). Elmosoft, Faux leather. BS7176-07 Low Hazard: Soft leather. Faux leather. Fabric (Orange 2, Divina 3, Divina Melange 2).

**UK DOMESTIC:**  
BS5852-1 Sch.4-5 Part1: Faux leather. Soft leather, Elmosoft. Fabric (Flora 2, Divina 3, Divina Melange 2, Hallingdal 65, Tonus 3, Topas 2). BS5852-1 Sch. 4 Part1: Fabric (Pro 2). USA Technical Bulletin 117: Fabric. Faux leather.



Art.0259 and 0259BV

EN 1728/2000 - EN 15373:2007 6.2.1 3°  
EN 1728/2000 - EN 15373:2007 6.2.2 3°  
EN 1728/2000 - EN 15373:2007 6.7 3°



**UK DOMESTIC:**  
BS5852/90 Sez.5 cigarette match



Art.0357 and 0357BV

UNI EN 1728/00 6.5 1.5 5°



**UK CONTRACT:**  
BS7176-07 Medium Hazard: Fabric (Flora 2, Pro, Tonus 3, Topas 2, Hallingdal 65). Elmosoft, Faux leather. BS7176-07 Low Hazard: Soft leather. Faux leather. Fabric (Orange 2, Divina 3, Divina Melange 2).

**UK DOMESTIC:**  
BS5852-1 Sch.4-5 Part1: Faux leather. Soft leather, Elmosoft. Fabric (Flora 2, Divina 3, Divina Melange 2, Hallingdal 65, Tonus 3, Topas 2). BS5852-1 Sch. 4 Part1: Fabric (Pro 2). USA Technical Bulletin 117: Fabric. Faux leather.



Art.0460 and 0460BV

UNI EN 1728/00 6.5 1.5 5°



**UK CONTRACT:**  
BS7176-07 Medium Hazard: Fabric (Flora 2, Pro, Tonus 3, Topas 2, Hallingdal 65). Elmosoft, Faux leather. BS7176-07 Low Hazard: Soft leather. Faux leather. Fabric (Orange 2, Divina 3, Divina Melange 2).

**UK DOMESTIC:**  
BS5852-1 Sch.4-5 Part1: Faux leather. Soft leather, Elmosoft. Fabric (Flora 2, Divina 3, Divina Melange 2, Hallingdal 65, Tonus 3, Topas 2). BS5852-1 Sch. 4 Part1: Fabric (Pro 2). USA Technical Bulletin 117: Fabric. Faux leather.



Art.0455 and 0455BV

EN 1728/2000 - EN 15373:2007 6.2.1 3°  
EN 1728/2000 - EN 15373:2007 6.2.2 3°  
EN 1728/2000 - EN 15373:2007 6.7 3°

arper

F +39 0422 791800

T +39 0422 7918

www.arper.com

\* For more information on product's certification and environment documents visit [www.arper.com](http://www.arper.com) or contact us at [environment@arper.com](mailto:environment@arper.com)

# Catifa 46 / Trestle swivel

## Design by Lievore Altherr Molina, 2004

### Fire retardant test

### Resistance test



UK CONTRACT:  
BS7176-07 Medium Hazard: Fabric (Flora 2, Pro, Tonus 3, Topas 2, Hallingdal 65). Elmosoft, Faux leather. BS7176-07 Low Hazard: Soft leather. Faux leather. Fabric (Orange 2, Divina 3, Divina Melange 2).  
UK DOMESTIC:  
BS5852-1 Sch.4-5 Part1: Faux leather. Soft leather, Elmosoft. Fabric (Flora 2, Divina 3, Divina Melange 2, Hallingdal 65, Tonus 3, Topas 2). BS5852-1 Sch. 4 Part1: Fabric (Pro 2).  
USA Technical Bulletin 117: Fabric. Faux leather.

Art.0314 and 0314BV  
EN 1728/2000 - EN 15373:2007 6.2.1 3°  
EN 1728/2000 - EN 15373:2007 6.2.2 3°  
EN 1728/2000 - EN 15373:2007 6.7 3°



arper

F +39 0422 791800

T +39 0422 7918

www.arper.com

\* For more information on product's certification and environment documents visit [www.arper.com](http://www.arper.com) or contact us at [environment@arper.com](mailto:environment@arper.com)