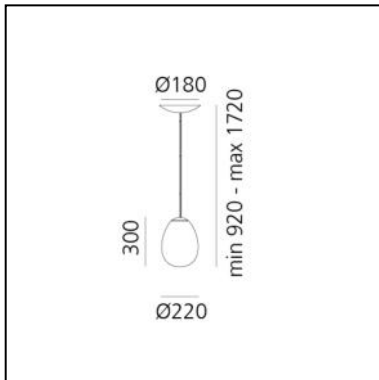


Stellar Nebula - 22

BIG - Bjarke Ingels Group



IP20   Dimmable: 



LUMINAIRE

- Watt: **11W**
- Flux Lumineux (lm): **486lm**
- CCT: **3000K**
- Efficiency: **47%**
- Efficacy: **44.18lm/W**
- CRI: **90**
- Dimmable Typology: **Push**

DESCRIPTION

Stellar Nebula is a family of lamps designed by BIG to interpret and enhance artisanal glass blowing with innovative PVD finishing techniques.

Values, roles and limits of industrial and artisanal production are the core of this project idea, which aims to find a solution of industrial uniqueness.

The shapes of the hand blown diffusers are always unique.

The suspension has three different sizes while the floor, table, ceiling and clusters are only in the medium one.

Artisanal know-how and industrial innovation thus come together in the beauty of the material that enhances the magic interaction between glass and light.

CODE PRODUIT: 0152010A

CARACTÉRISTIQUES

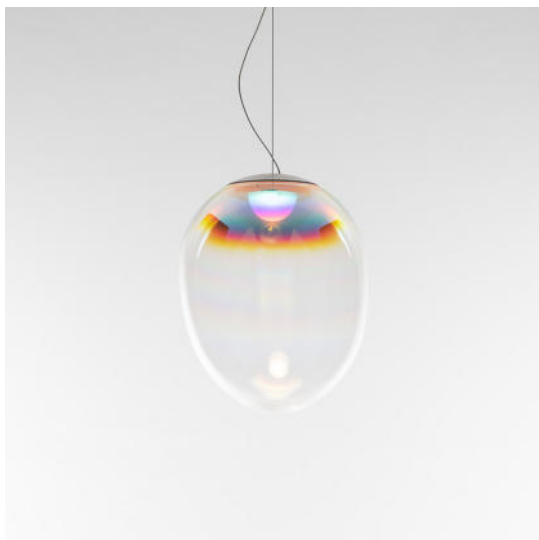
- Code Article : **0152010A**
- Couleur: **Iridescent**
- Installation: **Suspension**
- Séries: **Design Collection, 2022 Artemide Collection**
- dessiné par: **BIG - Bjarke Ingels Group**

DIMENSIONS

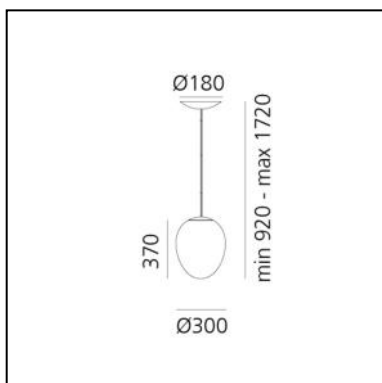
- Hauteur: **cm 30**
- Diamètre: **cm 22**

Stellar Nebula - 30

BIG - Bjarke Ingels Group



IP20   Dimmable: 



LUMINAIRE

- Watt: **20W**
- Flux Lumineux (lm): **1890lm**
- CCT: **3000K**
- Efficiency: **83%**
- Efficacy: **94.50lm/W**
- CRI: **90**
- Dimmable Typology: **Push**

DESCRIPTION

Stellar Nebula is a family of lamps designed by BIG to interpret and enhance artisanal glass blowing with innovative PVD finishing techniques.

Values, roles and limits of industrial and artisanal production are the core of this project idea, which aims to find a solution of industrial uniqueness.

The shapes of the hand blown diffusers are always unique. The suspension has three different sizes while the floor, table, ceiling and clusters are only in the medium one.

Artisanal know-how and industrial innovation thus come together in the beauty of the material that enhances the magic interaction between glass and light.

CODE PRODUIT: 0152020A

CARACTÉRISTIQUES

- Code Article : **0152020A**
- Couleur: **Iridescent**
- Installation: **Suspension**
- Série: **Design Collection, 2022 Artemide Collection**
- dessiné par: **BIG - Bjarke Ingels Group**

DIMENSIONS

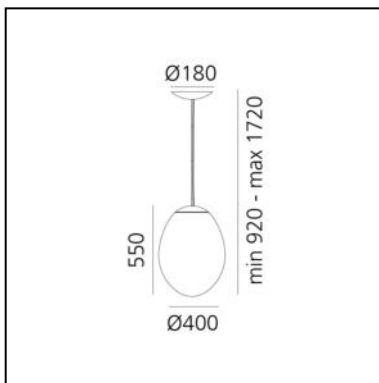
- Hauteur: **cm 37**
- Diamètre: **cm 30**

Stellar Nebula - 40

BIG - Bjarke Ingels Group



IP20   Dimmable: 



LUMINAIRE

- Watt: **28W**
- Flux Lumineux (lm): **2536lm**
- CCT: **3000K**
- Efficiency: **84%**
- Efficacy: **90.57lm/W**
- CRI: **90**
- Dimmable Typology: **Push**

DESCRIPTION

Stellar Nebula is a family of lamps designed by BIG to interpret and enhance artisanal glass blowing with innovative PVD finishing techniques.

Values, roles and limits of industrial and artisanal production are the core of this project idea, which aims to find a solution of industrial uniqueness.

The shapes of the hand blown diffusers are always unique.

The suspension has three different sizes while the floor, table, ceiling and clusters are only in the medium one.

Artisanal know-how and industrial innovation thus come together in the beauty of the material that enhances the magic interaction between glass and light.

CODE PRODUIT: 0152030A

CARACTÉRISTIQUES

- Code Article : **0152030A**
- Couleur: **Iridescent**
- Installation: **Suspension**
- Séries: **Design Collection, 2022 Artemide Collection**
- dessiné par: **BIG - Bjarke Ingels Group**

DIMENSIONS

- Hauteur: **cm 55**
- Diamètre: **cm 40**