

bruunmunch  / Reason / specs





## Description

---

Reason is a reinterpretation of the Danish design language from the 50s where big design icons such as Hans J. Wegner and Illum Wikkelsø helped create the style still defines Danish design.

The low armrests on Reason in combination with the long upholstered seating surfaces and backs finished with an exclusive frame and legs made of solid oak, reminiscent of the 50s and the Danish design icons.

Reason sofa series consists of a large 2.5-seater sofa a 2 seater sofa and 2 seater sofa with chaise longue. A daybed and a pouf.

Reason is pulled in a contemporary direction around the performance characteristics and comfort. The edges are "sanded" away and delicious soft material makes Reason into a sofa for the consumer of today.

## Construction

---

The frame is built from plywood in combination with seat frames in massive pine wood - fitted with Nosag steel springs. Fire retardant Oeko-Tex cold cured foam everywhere - and the seats are composed from two qualities to give a nice soft and durable cushion. The majority seat made from 40 kg cold cured fire retardant foam.

Heavy wrappings of soft foam covers both seats, arms and backs - complete with a thick layer of fiber padding sewn into the fabric.

A sturdy plinth and legs of solid oak completes Reason.

## Designers

---

Peter Barreth is co-founder of versus and has worked as in-house designer at versus since 2010 in co-operation with Henrik Lerche.

As a 3rd generation upholsterer, Peter has furniture in his blood.

The style is clean and uncompromising strongly rooted in traditional techniques and craftsmanship influenced by the strong danish design decade - the 1960's.



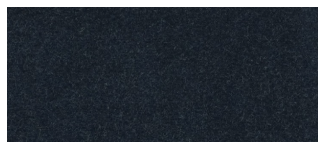




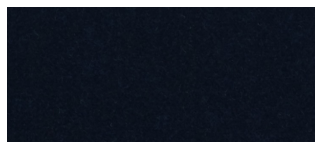
## Upholstry options

### Harald 2

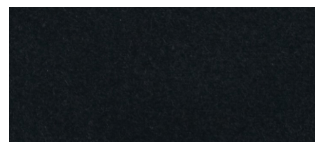
Manufacturer: Kvadrat  
Design: Raf Simons & Fanny Aronsen  
Composition: 100% Cotton  
Martindale: 100.000



182



792



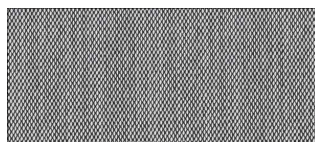
982

### Steelcut Trio

Manufacturer: Kvadrat  
Design: Dijkmeijer og Ridolfo  
Composition: 90% new wool, 10% nylon  
Martindale: 100.000



113



124



133

## Dimensions



### 2-seater

Width 208/160 cm  
Depth 96/68 cm  
Height 68/39 cm



### 2.5-seater

Width 248/200 cm  
Depth 96/68 cm  
Height 68/39 cm



### 2-seater m. chaiselong

Width 288/240 cm  
Depth 134/106 cm  
Height 68/39 cm