

Pacha Collection - Lounge Chair - Fully Upholstered

Designed by Piere Paulin - 1975



ITEM NUMBER

Pacha lounge chair	10964
Pacha lounge chair - returning swivel	11601

DESCRIPTION

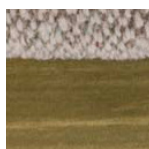
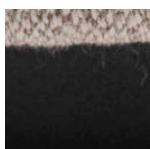
When the Pacha Collection was designed in 1975, it replaced the austerity of post-war design with a more organic approach, reflecting the changing design style of the time. A joyful modernist, Paulin's low-slung pieces provided a new laid-back perspective on life and his forward-looking, eclectic and sculptural approach to furniture design instantly caught the mood of the swinging 60's.

The Pacha lounge chair is fully upholstered, has a painted wood base and is available with a fixed base or returning swivel base.

Materials & Finishes

BASE FINISH

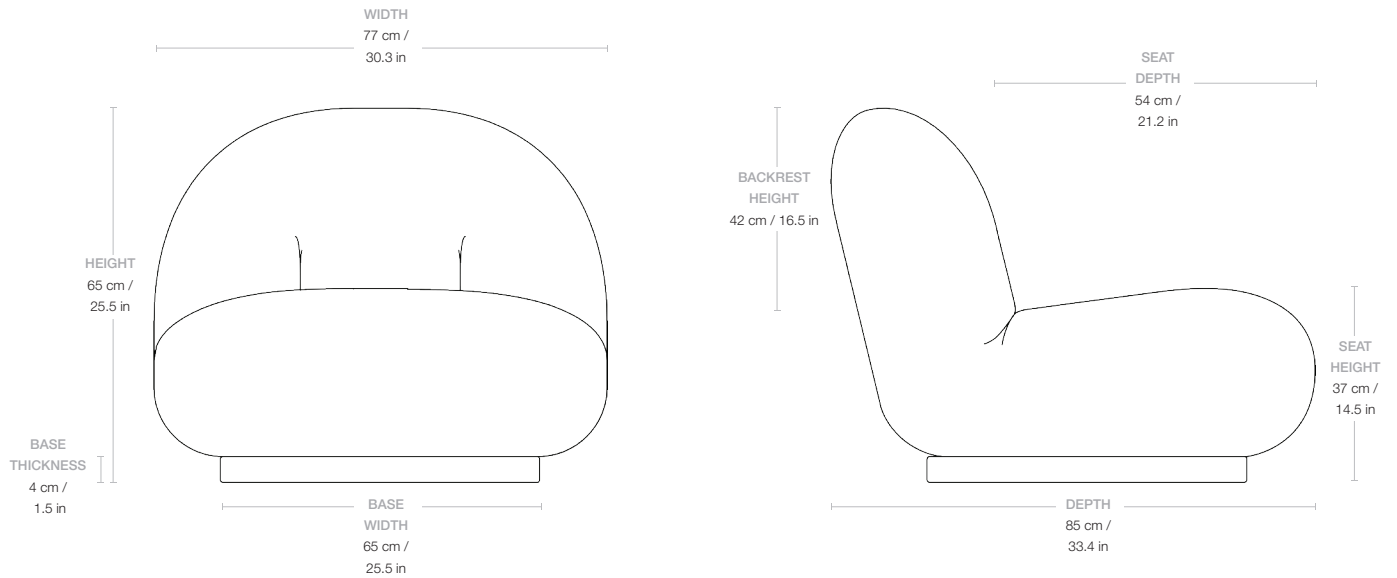
Black Semi Matt (RAL 9005 / Gloss 10) , Pearl Gold (RAL 1035 Pearl beige / Gloss 10)



MATERIALS

Bend plywood (inside structure), cut foam (padding and armrest), laquered MDF (base)

Dimensions



WIDTH	77 cm / 30.3 in
DEPTH	85 cm / 33.4 in
HEIGHT	65 cm / 25.5 in
SEAT WIDTH	77 cm / 30.3 in
SEAT DEPTH	54 cm / 21.2 in
SEAT HEIGHT	37 cm / 14.5 in
BACKREST HEIGHT	42 cm / 16.5 in

Weight

TOTAL WEIGHT 26 kg / 27,5 kg (returning swivel) / 57,32 lbs / 60,62 lbs (returning swivel)

Upholstery Consumption

X 140 CM FABRIC WIDTH / X 55 IN FABRIC WIDTH

FABRIC CONSUMPTION 280 cm / 110 in

Packaging

NUMBER OF PARCELS	1
PACKAGING LENGTH	120 cm / 47,24 in
PACKAGING WIDTH	80 cm / 31,49 in
PACKAGING HEIGHT	85 cm / 33,46 in
PACKAGING WEIGHT	14,5 kg / 31,96 lbs
GROSS WEIGHT	40,5 kg / 42 kg (returning swivel) / 89,28 lbs / 92,59 lbs (returning swivel)

Test & Certifications

TSCA	Yes, title VI Compliant for Formaldehyde
CALIFORNIA TB 117	Yes, US only
BS5852 (CRIB5)	Yes, UK only

Glides

RUBBER GLIDES	Included as standard
---------------	----------------------

KEY FEATURES	The option to create your own modular configurations, see the pricelist for all pre-configured options.
--------------	---

INDIVIDUAL MODULES	Please note that the standard Pacha Lounge chair does not work as a module for configurations . For configurations the Center module needs to be used.
--------------------	--