

KartellSOFT

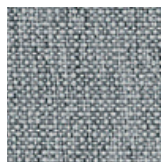
TREVIRA NOMA FABRIC



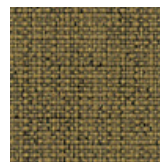
NEW!

NOMA new fabric made with 50% recycled polyester

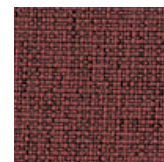
Maui Soft



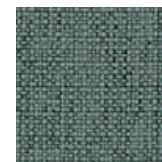
NG
grey



NS
mustard



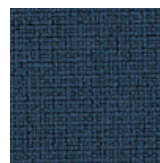
NM
ochre



NV
green



NB
beige



NL
blue

NOMA – FIRE RESISTANCE RECYCLED!

The new Noma fabric blends aesthetic simplicity and classic colourways with sustainable innovation and superior flame retardancy.

Upholstery Kartell fabric Noma is distinguished by its attractive, durable and all-round two-toned melange design, its excellent fire resistance and strong environmental profile.

Made from 50% post-consumer recycled flame retardant polyester. It meets all common European fire safety standards, diverts waste from landfill and saves virgin materials.

Kartell has selected 6 color variants included in the catalogue, immediately available, but offers the whole range of colors as a Customer Fabric*.

Composition 50% Recycled PL, 50% PL Trevira

Martindale 60.000



Highly usable and all-round design

Classic colours with a twist

Superior fire resistance

Good stretch properties

Prolongs furniture life

Strong environmental profile

No heavy metal

50% post-consumer recycled flame retardant polyester

STANDARD 100 by OEKO-TEX®

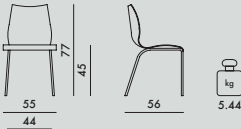
Meet Möbelfakta requirements

MAUI SOFT 2013

Tribute to Vico Magistretti

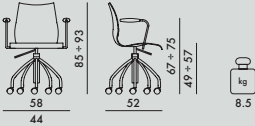
2895

T2895



2897

Armchair on casters with gas lift pump



Fire-resistant version

TREVIRA FABRIC
IT UNI 9175, EN1021 fire reaction test,
class 1 IW ministerial certification M01848D20D1IW00015
UK Standard BS5852 S5, BS 7176 Medium Hazard - S1. 1324
US California Standard TB 117
NOMA FABRIC IT UNI 9175, EN1021 fire reaction test,
class 1 IW Ministerial approval pending

FRAME

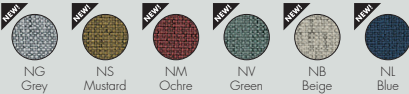
Chrome-plated steel

SHELL

Fabric-covered nylon

COVER

New Noma fabric made with 50% recycled polyester



Trevira



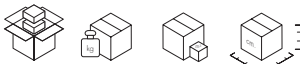
T2895



Customer fabric

In order to better satisfy the needs of common areas, Maui Soft is also available in a personalised version with fabrics provided by the client, for orders of at least 4 items.
Dimensions of customised fabric to cover a single piece: 140x125 cm.

EN 1022:2005	Compliant
EN 15373:2007	Level achieved
Attachment A para. A.2	(maximum level) 3
EN 1728:2000	Level achieved
6.2.1	(maximum level) 3
6.2.2	(maximum level) 3
6.7	(maximum level) 3
6.8	(maximum level) 3
6.12	(maximum level) 3
6.13	(maximum level) 3
6.15	(maximum level) 3
6.16	(maximum level) 3



2895	2	13.8	0.327	59X59X94
2897	1	11.6	0.255	57X52X86

NG - grey

NS - mustard

NM - ochre



NV - green

NB - beige

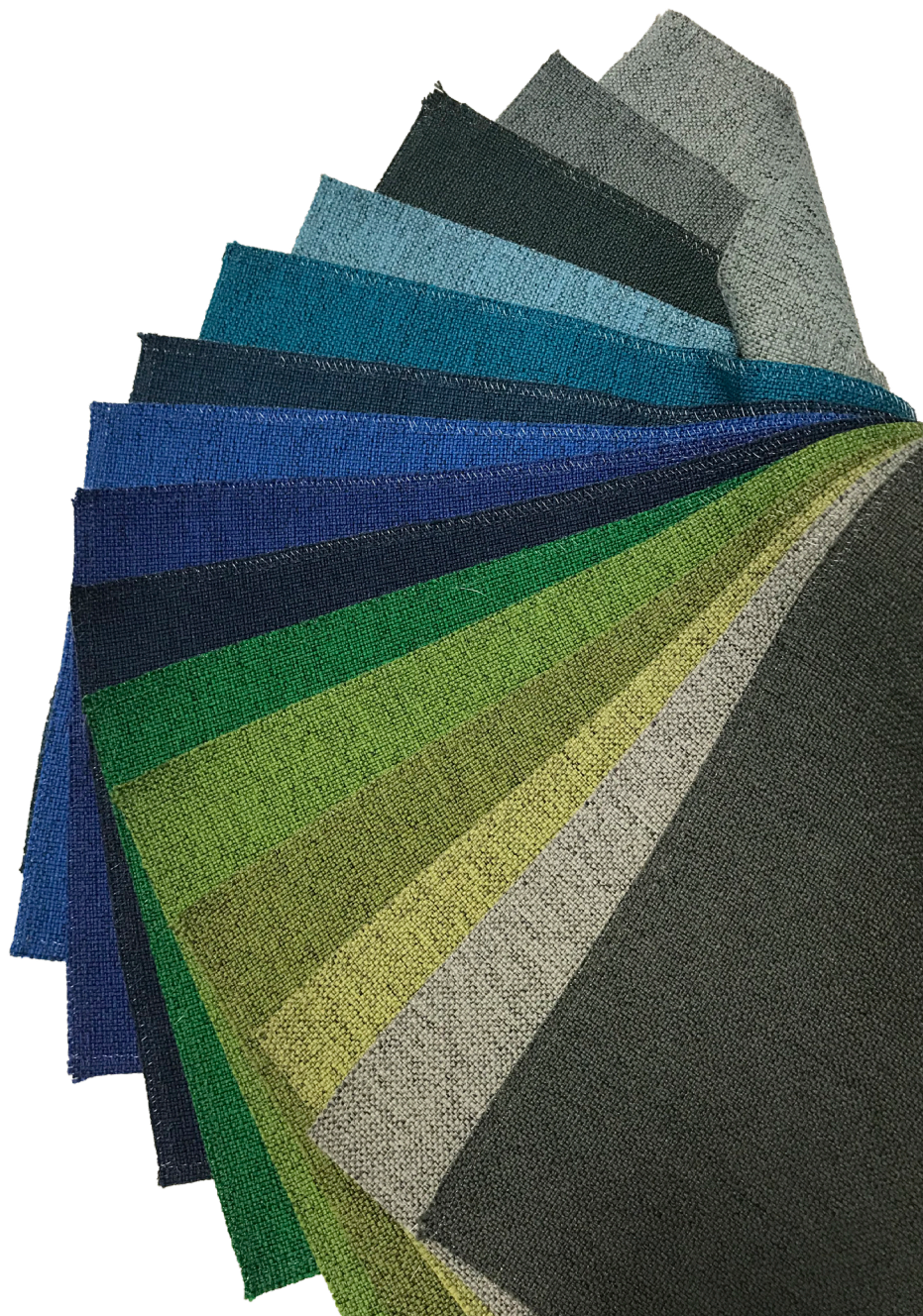
NL - blue





CUSTOMISED FABRIC

*In order to better satisfy the needs of common areas, Maui Soft is also available in a personalised version with fabrics provided by the client, for orders of at least 4 items.
Dimensions of customised fabric to cover a single piece: 140x125 cm.



KartellSOFT
TREVIRA NOMA FABRIC