

# Lounge Chair & Ottoman

Charles & Ray Eames, 1956



**vitra.**





Eames Lounge Chair & Ottoman staged at the Eames House, Pacific Palisades, California © Eames Foundation, 2023

# Lounge Chair

Charles & Ray Eames, 1956



„Why don’t we make an updated version of the old English club chair?“ With this comment, Charles Eames initiated the development of the Lounge Chair, a process that took several years. The design was intended to pair ultimate comfort with the highest quality in materials and craftsmanship, incorporating the combined expertise and insights Charles and Ray Eames had gained from all their past projects. The 1956 launch of the Lounge Chair set new standards: it was not only lighter, more elegant and more modern than the conventionally ponderous club chair, it was also more comfortable – not least because it was the first armchair to feature a swivel base. These characteristics led it to become one of the best known designs by Charles and Ray Eames and an iconic piece of contemporary furniture.

True to the spirit of the Eameses, Vitra has now further refined many details of the Lounge Chair, drawing on decades of production experience and ensuring its sustainability for the future.

There are now six different veneer options to choose from for the wooden shells – with the exception of palisander, all the wood is now sourced in Europe. The composition of the inner layers of the veneer shells has also been revised with a view to sustainability and the face veneer or surface is now treated with a water-based varnish instead of a polyurethane coating.

The fabric and leather covers can be removed for cleaning or replacement. And all the individual elements – wooden shells, covers in many colours and bases – can be freely combined. Thanks to this choice of new options, armchairs can be configured with an unprecedented level of customisation, making it easy to find the right Lounge Chair and Ottoman for every taste and need.

1–5	Eames Lounge Chair & Ottoman	14–15	3 frame and base options	44	Spare parts, cleaning
6–7	2664 possible configurations	20–31	Curated recommendations		and maintenance
8–9	Lounge Chair and Ottoman	32–37	Colours and materials	45	Quality, longevity
	in two sizes	40–43	Sustainable materials		and Vitra product warranty
12–13	6 wood veneers				

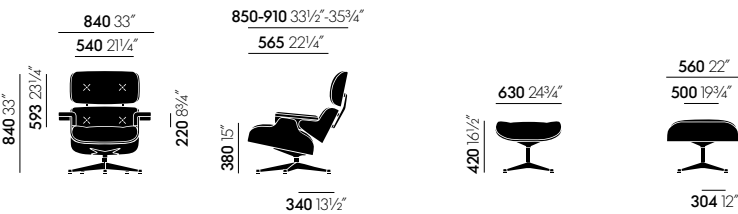








# Lounge Chair & Ottoman in two sizes

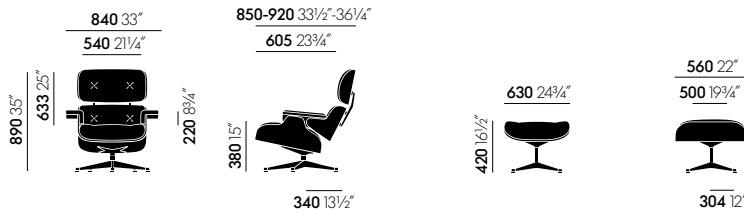


Lounge Chair Classic Lounge Chair Ottoman

The Lounge Chair is available from Vitra in two sizes: with classic dimensions or with new, larger measurements. The classic size is suited for people up to 184 cm in height, while the new dimensions are ideal for taller individuals.

## Materials

- **Seat and back shells:** moulded plywood, face veneer. Chestnut (Central Europe), European cherry (Central Europe), Santos palisander (Bolivia; certified sustainability) or European black walnut (Southeast Europe, Central Europe).
- **Upholstery/cover:** removable cushions made of recyclable polyurethane V-Foam, removable covers in leather or fabric.
- **Armrests:** padded with recyclable polyurethane V-Foam, removable covers in leather or fabric. Attached to the seat and back shells with shock mounts (bonded rubber and metal connectors).
- **Seat height:** 380 mm (250 mm with applied load, measured in accordance with EN 1335-1:2000).



Lounge Chair Contemporary Lounge Chair Ottoman

Since the Lounge Chair first went into production, average human height has increased worldwide by nearly 10 cm. In close coordination with the Eames Office, Vitra developed the new larger version so that taller people, too, can enjoy the same exceptional comfort that Charles and Ray Eames intended with their original 1956 design.

- **Base:** five-star swivel base or four-star non-swivel base (Ottoman). Both base and back braces in die-cast aluminium.
- **Glides:** all bases fitted with hard glides for carpet; felt glides optionally available for hard floors.

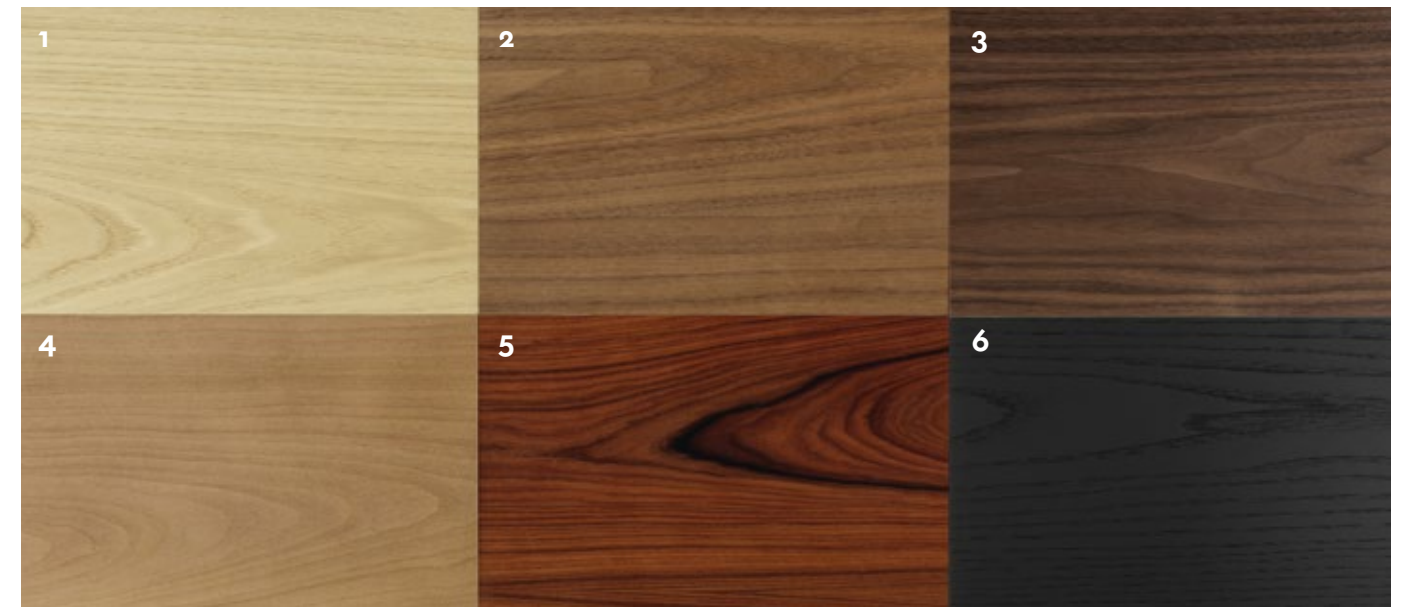








## 6 wood surface finishes



### 1. Chestnut, natural, lacquer finish

Chestnut exhibits prominent growth rings with an open grain that lends it a warm, inviting appearance. In the natural version, the wood has a honey-coloured tone that deepens over time into a light golden reddish-brown.

### 2. Walnut, natural

Known for its subtle grain, American walnut was brought to Europe centuries ago. European black walnut differs from its American counterpart due to its slightly lighter colour with more pronounced grey tones.

### 3. Walnut, dark

Wooden shells in dark European walnut have a refined, understated elegance. Thanks to its even grain, walnut offers a more subdued alternative to palisander, which is similarly dark but more expressive in character.

### 4. European cherry

European cherry has a golden yellow to reddish hue that darkens with age into a warm reddish brown. Its fine-pored texture and uniform grain give it a calm, elegant appearance.

### 5. Santos palisander

With its lively grain pattern, palisander was an integral part of the original design by Charles and Ray Eames and is still considered the 'classic version' today. Vitra uses santos palisander from FSC-certified forests in Bolivia.

### 6. Chestnut, black, lacquer finish

Even in the black lacquered version, chestnut veneer retains its warm, natural look and can be attractively paired with dark leather and fabric colours as well as the black base frame.



3 frame and base options

**vitra.**



Back braces and base in polished aluminium



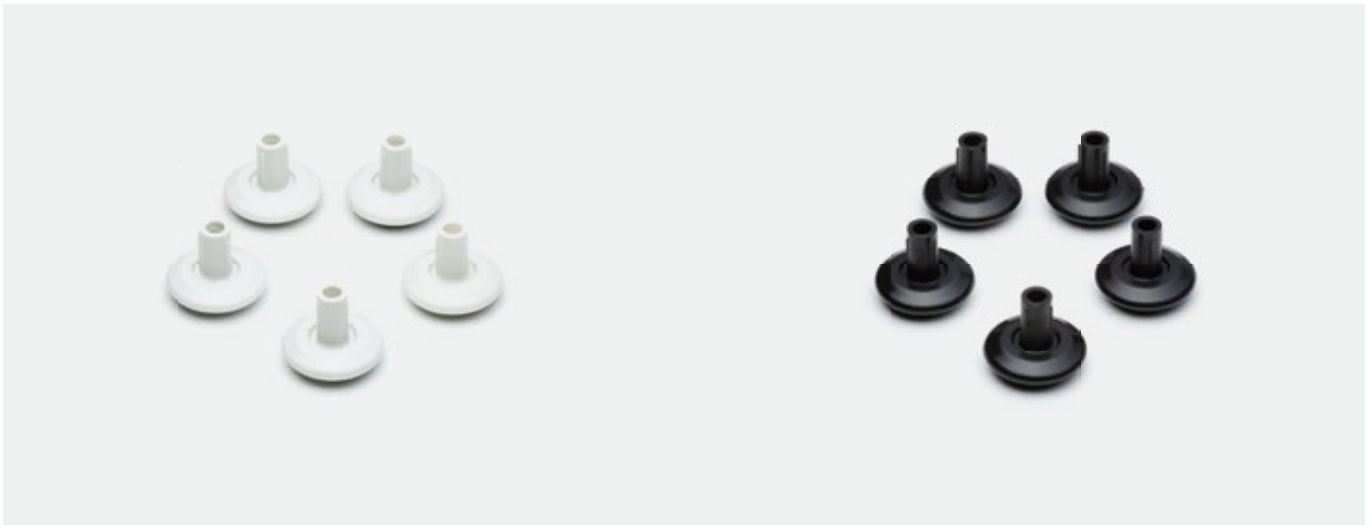
Back braces and base in black aluminium



Back braces and base in black aluminium, edges trimmed in polished aluminium



Glides for hard and soft floors



The Lounge Chair and Ottoman are available with glides in white or black. There are glides for carpeted floors and glides with felt pads specifically for hard surfaces.











Chestnut, natural

**Nubia**  
02 cream/pearl

**Nubia**  
04 bamboo/terra

**Leather Natural F**  
78 dark sand

**Leather Premium F**  
97 cognac

**Nubia**  
06 cream/sierra grey

**Nubia**  
08 ivory/dark blue

**Leather Premium F**  
60 smoke blue

**Leather Premium F**  
71 sand

## Curated recommendations

**vitra.**



Lounge Chair and Ottoman in chestnut, natural, lacquer finish, covers in Nubia, 02 cream/pearl, and 04 bamboo/terra



Lounge Chair and Ottoman in chestnut, natural, lacquer finish, covers in Leather Premium F, 97 cognac



Lounge Chair and Ottoman in chestnut, natural, lacquer finish, covers in Leather Premium F, 60 smoke blue, and Nubia, 08 ivory/dark blue



Cherry, natural



# Curated recommendations



Lounge Chair and Ottoman in cherry, natural, lacquer finish, covers in Nubia, 05 cream/dark brown



Lounge Chair and Ottoman in cherry, natural, lacquer finish, covers in Leather Premium F, 97 cognac



Lounge Chair and Ottoman in cherry, natural, lacquer finish, covers in Leather Natural F, 78 dark sand, and Nubia, 06 cream/sierra grey





## Curated recommendations



Lounge Chair and Ottoman in walnut, natural, lacquer finish, covers in Nubia, 05 cream/dark brown, and Leather Premium F, 59 jade



Lounge Chair and Ottoman in walnut, natural, lacquer finish, covers in Leather Premium F, 58 khaki



Lounge Chair and Ottoman in walnut, natural, lacquer finish, covers in Leather Premium F, 59 chestnut, and Leather Natural F, 66 nero



Walnut, dark

Leather Natural F  
68 chocolate

Leather Premium F  
66 nero

Leather Premium F  
60 smoke blue

Leather Premium F  
61 umbra grey

Nubia  
11 anthracite/black

Nubia  
09 ivory/forest

Curated recommendations



Lounge Chair and Ottoman in walnut, dark, lacquer finish, covers in Leather Natural F, 68 chocolate, and Leather Premium F, 60 smoke blue



Lounge Chair and Ottoman in walnut, dark, lacquer finish, covers in Leather Premium F, 66 nero



Lounge Chair and Ottoman in walnut, dark, lacquer finish, covers in Nubia, 09 ivory/forest, and Leather Premium F, 61 umbra grey



Santos palisander



Curated recommendations



Lounge Chair and Ottoman in santos palisander, lacquer finish, covers in Leather Premium F and Leather Natural F, 66 nero



Lounge Chair and Ottoman in chestnut, black, lacquer finish, covers in Nubia, 11 anthracite/black



Lounge Chair and Ottoman in santos palisander, lacquer finish, covers in Leather Natural F, 66 nero



Chestnut, black



Curated recommendations



Lounge Chair and Ottoman in chestnut, black, lacquer finish, covers in Leather Natural F, 66 nero



Lounge Chair and Ottoman in chestnut, black, lacquer finish, covers in Nubia, 10 salt'n'pepper



Lounge Chair and Ottoman in chestnut, black, lacquer finish, covers in Leather Premium F, 66 nero, and Nubia, 11 anthracite/black



Base



03  
Aluminium poliert

Metal

Vitra most frequently uses aluminium and steel for metal components. Since 94% less energy is required to produce recycled aluminium in comparison to primary aluminium, Vitra utilises aluminium consisting of 95% recycled material whenever possible. Depending on the product, metal surfaces are either powder-coated, chrome-plated, polished, galvanised, lacquered or blasted. A smooth or textured powder-coated finish provides colour and surface protection.

03  
polished al-  
minium

03/12  
aluminium polished/  
deep black powder-  
coated (smooth)

12  
deep black  
powder-coated  
(smooth)

Seat and back shells



26  
Chestnut, natural, lacquer finish

Veneer

Complex industrial methods are used to produce sheets of wood veneer, which are further processed by hand. In most cases, wood from a single tree is utilised for a piece of furniture to ensure the uniform appearance of all surfaces. With only two exceptions, Vitra exclusively purchases veneers with a certificate of sustainability from European producers. Vitra’s veneers are finished with a protective lacquer; exposure to light will alter the colour over time.

26  
Chestnut,  
natural, lacquer  
finish

27  
Chestnut,  
black, lacquer  
finish

28  
Cherry, natural,  
lacquer finish

31  
Walnut, natural,  
lacquer finish

32  
Walnut, dark,  
lacquer finish

05  
Santos palisander,  
lacquer finish



# Nubia Medium use, F100



Nubia is a blended fabric with a very lively, natural appearance. Its fine substructure is interspersed with voluminous bouclé yarn, which gives the fabric depth and a soft, inviting touch. The varying combinations of yarns yield either contrasting or calm colour compositions with a distinctly Mediterranean flair.

Nubia is available in 11 colours.

Material	2% polyamide, 30% new wool, 25% polyacrylics, 43% polyester
Weight	570 g/m <sup>2</sup> (16.8 oz/y <sup>2</sup> )
Width	140 cm (55")
Abrasion resistance	35,000 Martindale
Fastness to light	Type 5
Pilling	Grade 4
Fastness to rubbing	Grade 3-4 dry and wet

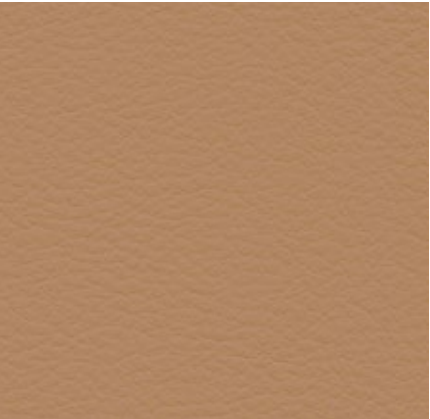
## Nubia

	<b>01</b> ivory/pearl		<b>06</b> cream/sierra grey
	<b>02</b> cream/pearl		<b>09</b> ivory/forest
	<b>03</b> cream/sand		<b>08</b> ivory/dark blue
	<b>04</b> bamboo/terra		<b>05</b> cream/dark brown
	<b>07</b> ivory/peach		<b>10</b> salt'n pepper
			<b>11</b> anthracite/black





# Leather Premium F Medium use, L50



Leather Premium F is a relatively smooth cowhide leather with a flat grain and fine top sheen. It is dyed-through, lightly pigmented and processed with a tanning agent extracted from olive tree leaves (a waste product of the olive harvest).

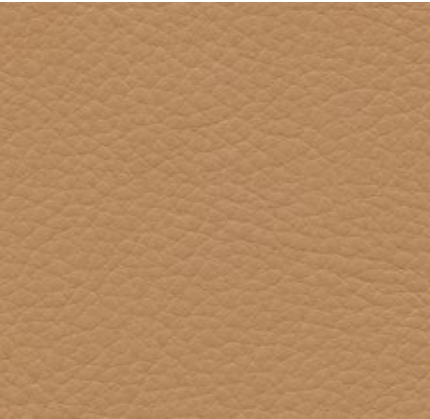
Leather Premium F is available in 22 colours.

Material	Semi-aniline nappa leather with a very soft and supple feel, vegetable tanned
Fastness to light	Type 5
Thickness	1,1–1,3 mm
Fastness to rubbing	Grade 4 dry and wet

## Leather Premium F

72 snow	65 granite	97 cognac	63 cashew
73 clay	67 asphalt	22 red stone	62 ochre
64 cement	60 smoke blue	93 brandy	75 camel
71 sand	59 jade	69 marron	74 olive
61 umbra grey	58 khaki	77 brown	
	66 nero	87 plum	
		68 chocolate	

# Leather Natural Residential use, L60



Leather Natural F is a very soft cowhide leather with an untreated grain. It is porous, breathable and acquires a lively patina through use. It is processed with a tanning agent extracted from olive tree leaves (a waste product of the olive harvest), and any chemicals used are harmless and applied in the smallest possible amounts.

This sustainable aniline leather exists in a choice of 4 colours.

Material	Aniline nappa leather with a natural open-pore grain, vegetable tanned
Fastness to light	Type 3
Thickness	1,3–1,5 mm

## Leather Natural F

78 dark sand
01 caramel
68 chocolate
66 nero







# Sustainable materials

vitra.

## European woods



Vitra is committed to using wood as sustainably as possible, without compromising on quality, durability or aesthetics. To shorten supply chains and reduce reliance on heavily used species like oak, Vitra is steadily increasing the share of European-sourced timber in its product portfolio and adding new varieties grown in Europe: cherry, chestnut and walnut. These new options complement the existing European woods in the collection, such as oak and ash.

Selected Eames designs will be the first products to feature the new wood types – bringing a fresh, natural aesthetic to these established classics. Palisander from Bolivia will remain available for the shells of the Eames Lounge Chair, as it was a central element of Charles and Ray Eames' original design.

## Water-based wood lacquers



Water-based lacquers will replace the petroleum-based polyurethane coatings previously employed for products whose use or aesthetics still require lacquered surfaces. Water-based coatings have a reduced carbon footprint and a significantly lower solvent content.



vitra.

## Recycled aluminium



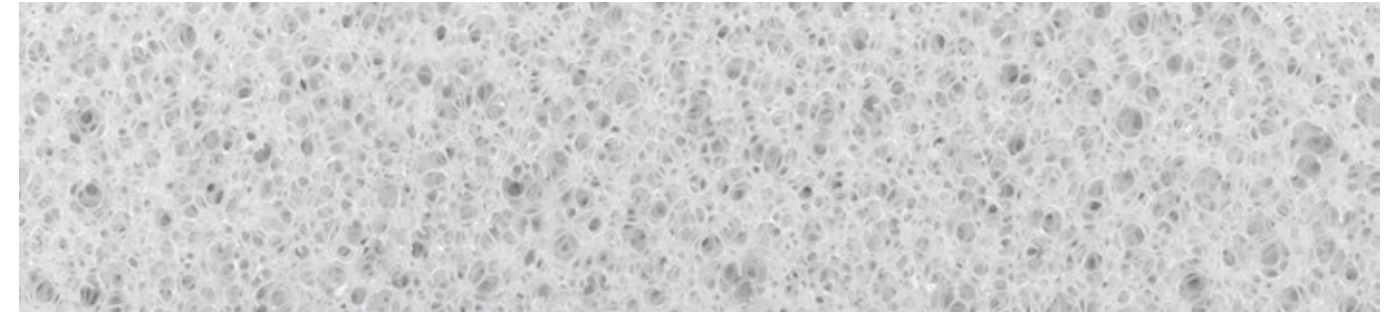
Alongside steel, aluminium is the metal most frequently used in Vitra's product portfolio. The production of recycled aluminium consumes only around 5% of the energy required for the extraction and processing of primary aluminium. All Vitra products that contain aluminium therefore include a substantial proportion of recycled material, which is being continually increased wherever technically feasible. The La Fonda base, for instance, contains 95% recycled aluminium. More than 90% of Vitra's aluminium components are sourced from suppliers in Europe.





## Sustainable materials

### V-Foam - meltable PU foam



Developed jointly by Vitra and BASF, V-Foam is the world's first economically recyclable polyurethane foam.

Standard polyurethane foam (PU foam) is derived from fossil fuels and utilised extensively worldwide. Its recycling process is very energy-intensive and uneconomical.

V-Foam, on the other hand, can be melted, reprocessed and returned to the material cycle in its entirety for use in new products. Vitra will gradually incorporate V-Foam for all its upholstered furniture containing moulded foam from 2025.

### Vegetable-tanned leather



Vegetable-tanned leather is produced in a tanning process that involves treating animal hides with plant extracts instead of heavy metals. This is the oldest and most environmentally friendly way to preserve leather.

At Vitra, leathers marked with an 'F' (for 'free') are tanned using a tanning agent made from olive tree leaves – a waste product of the olive harvest. Throughout the entire process, the use of chemicals is kept to a minimum and only non-hazardous substances are applied. The olive leaf extract is a vegetable-based syrup whose production helps to reduce CO<sub>2</sub>-emissions, as the leaves are no longer burned after the harvest but collected and processed at the place of origin.



# Spare parts, care instructions



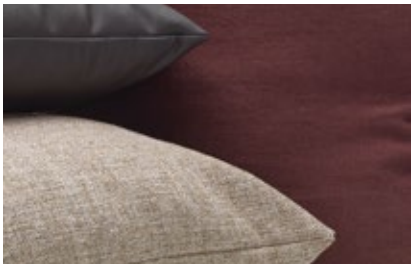
## Spare parts

For new covers or other spare parts, please contact the Vitra Service team or a local Vitra dealer.  
[Link to website](#)



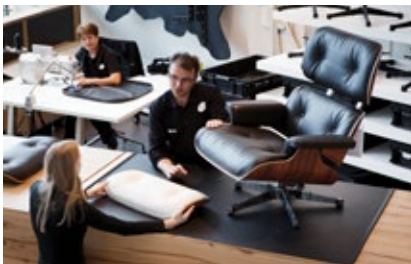
## Care instructions

Here you will find care instructions for cover fabrics, leather, plastics and metals.  
[Link to website](#)



## Maintenance

For matters relating to maintenance and repair or general enquiries, contact our Service Team using the following form.  
[Link to Service Team contact form](#)



## Find Vitra

Here you can find the nearest Vitra location or a Vitra partner for local assistance.  
[Find Vitra](#)



# Quality, longevity and Vitra Product Warranty



### Vitra Test Center

Vitra has its own Test Center where all sofas undergo rigorous testing to simulate 15 years of use. Vitra's inspection catalogue includes the world's toughest tests (simulation of worst-case

usage), with requirements that far exceed standard regulations. Over the years, Vitra has developed additional tests of its own that are not found in any official catalogue of standards.

## Vitra product warranty

Designed and manufactured for longevity, Vitra products are backed by a quality promise guiding every aspect of their development and production. Registered products qualify for either a 10- or 30-year warranty, unlocking various benefits including product identification, origin tracing, and access to designer information and care instructions. This warranty reflects Vitra's commitment to sustainability.

Full terms and conditions and further information are available [here](#) for review. For USA & Canada, specific conditions apply.

The Lounge Chair is eligible for the 10-year Vitra Product Warranty when registered through <https://my.vitra.com> für for private use.





