

# Akari Light Sculptures

13A,14A,UF4-33N,UF4-L8,UF4-L10,BB3-55DD,BB3-33S

Distributed by Vitra  
Design: Isamu Noguchi



Assembly instructions  
Montageanleitung  
Notice de montage  
Instrucciones de montaje  
Montagehandleiding  
Istruzioni per il montaggio

**vitra.**

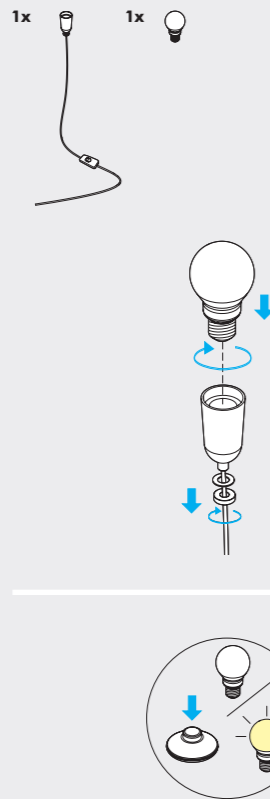


Vitra Factory GmbH  
Charles-Eames-Strasse 2  
79576 Weil am Rhein  
Germany

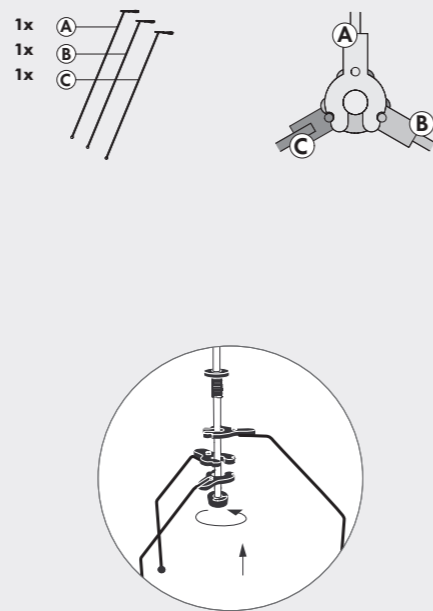
[www.vitra.com/akari](http://www.vitra.com/akari)

2019-B, Art.-Nr. 629 134.75

## 1 Akari Light Sculptures 13A, 14A, UF4-33N, UF4-L8, UF4-L10, BB3-55DD, BB3-33S



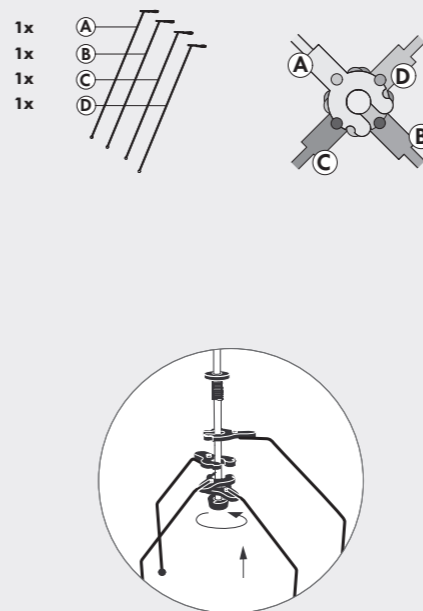
## 2 Akari Light Sculptures UF4-33N, UF4-L8



## 3 Akari Light Sculptures UF4-33N, UF4-L8



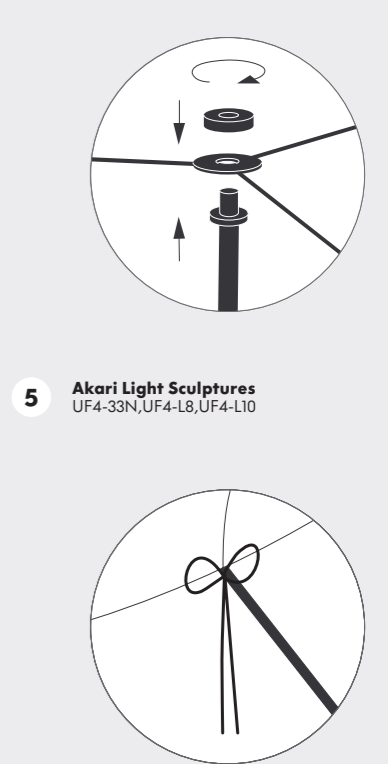
## 2 Akari Light Sculptures UF4-L10



## 3 Akari Light Sculptures UF4-L10

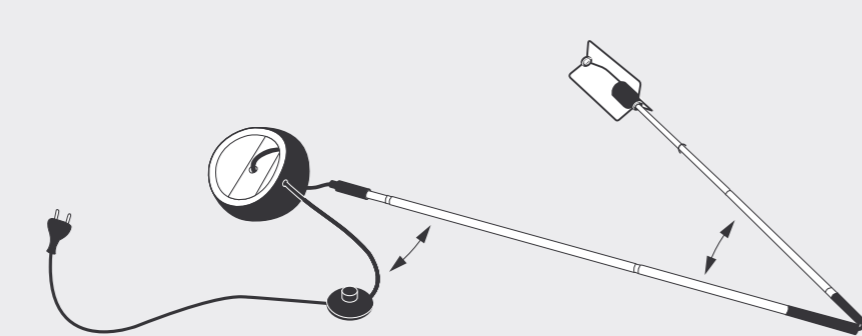


## 4 Akari Light Sculptures UF4-33N, UF4-L8, UF4-L10

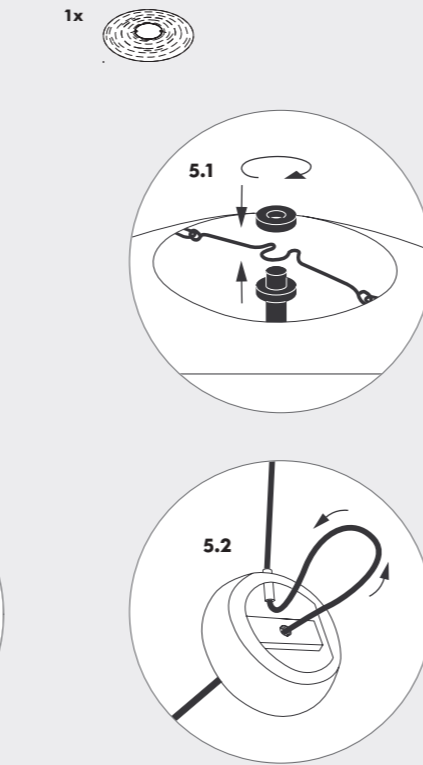


## 5 Akari Light Sculptures UF4-33N, UF4-L8, UF4-L10

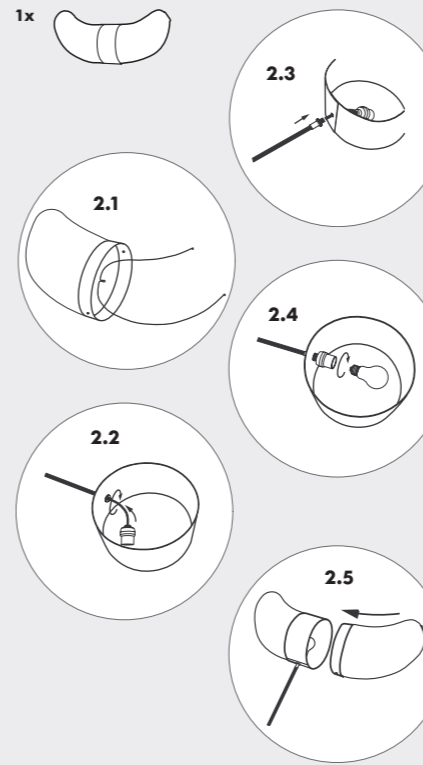
## 2 Akari Light Sculptures BB3-55DD, BB3-33S



## 5 Akari Light Sculptures BB3-55DD



## 2 Akari Light Sculptures BB3-33S



## 2 Akari Light Sculptures 13A, 14A

